

054370

RECEIVED
LARAMIE COUNTY
CHEYENNE, WY.

CERTIFIED LAND CORNER RECORDATION

'89 FEB 21 PM 1.09

DESCRIPTION OF CORNER EVIDENCE FOUND, AND ORIGINAL RECORD (if known)

S.36 S.31
S.1 S.6
T.20N.
R.67W. R.66W.
6th P.M.

Found no evidence of previous monumentation.

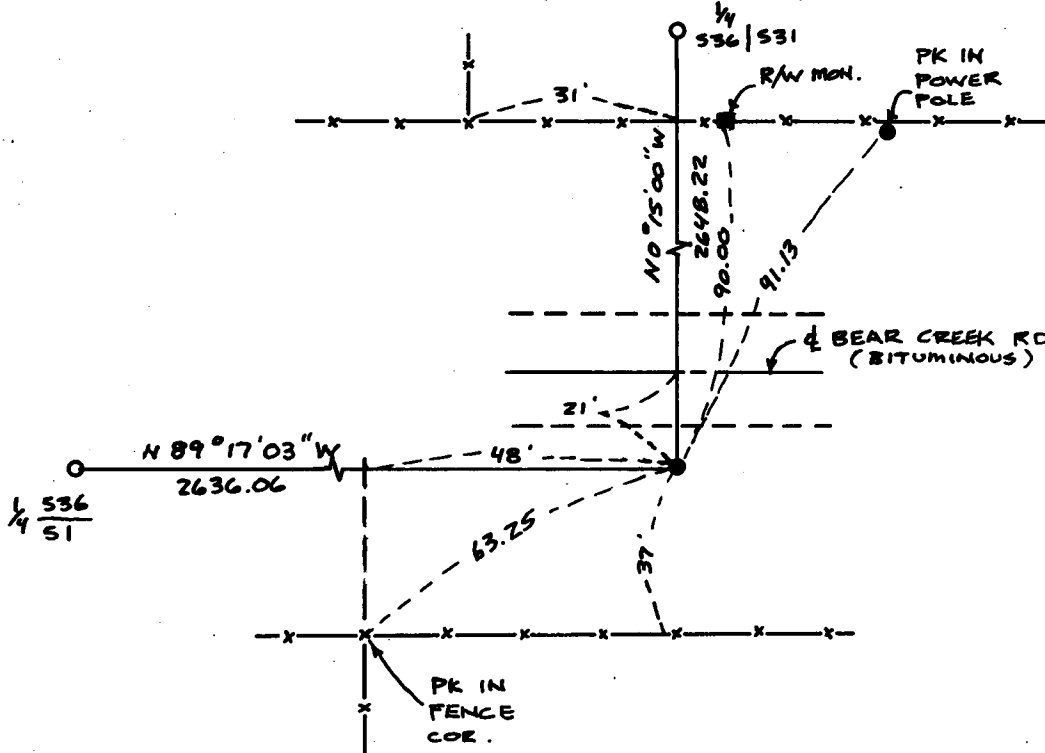
G.L.O. Record: Stone 33"x24"x3" with mound of stone. Set by J.W. Hammond, August 19, 1872.

DESCRIPTION OF MONUMENT AND ACCESSORIES ESTABLISHED TO PERPETUATE THE ORIGINAL LOCATION OF THIS CORNER:

At the corner: Set 5/8"x18" rebar with 2" Aluminum Cap stamped as shown below flush with ground. Set at proportionate distance. Set position from WHD R/W plans Project No. R-AD-6(1)

Accessories : See ties below.

SKETCH, WITH COURSE AND DISTANCE TO ADJACENT CORNER IF DETERMINED IN THIS SURVEY. (May Sketch or Paste Reproduction on Reverse Side.)



555
R67W R66W
T20N 36 | 31
T19N 1 | 6
1988
LS2500

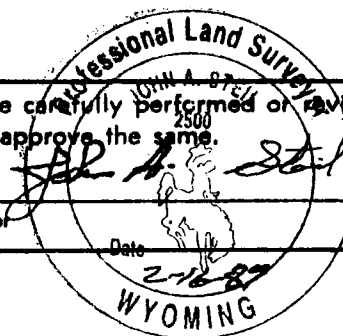


I, John A. Steil certify that I have carefully performed or reviewed the work done on the diagrammed corner as reported on this recordation form and approve the same.

Signature of Surveyor

Date

L.S. 2500
Registration No.



STATE OF WYOMING,
Office of Clerk and Recorder,
County of _____

This "corner record" was filed for record on the _____ day of _____, 19____, was noted on the cross-index plat and is assigned page No. _____, in book No. _____

Janet C. Whitehead
County Official

Cross Index No.	A-1	T. 19N	R. 66W	Mer. 6th
	A-25	T. 19N	R. 67W	Mer. 6th
	Z-1	T. 20N	R. 66W	Mer. 6th
	Z-25	T. 20N	R. 67W	Mer. 6th
		T. _____	R. _____	Mer. _____
		T. _____	R. _____	Mer. _____
		T. _____	R. _____	Mer. _____